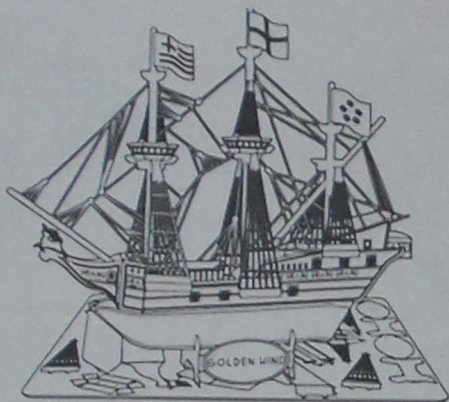
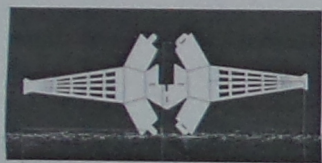


# 3D METAL MODEL KITS



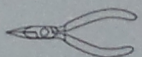
PF-SV009



Insertion tabs are inserted and then folded  
固定卡扣

Insertion holes  
固定孔

Fold lines can be seen as shown here  
折疊線

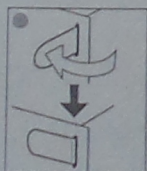


Needle nose pliers are helpful for assembly  
為方便製作，可另購鉗子，鑷子等工具

To create the best connections  
兩種固定方式

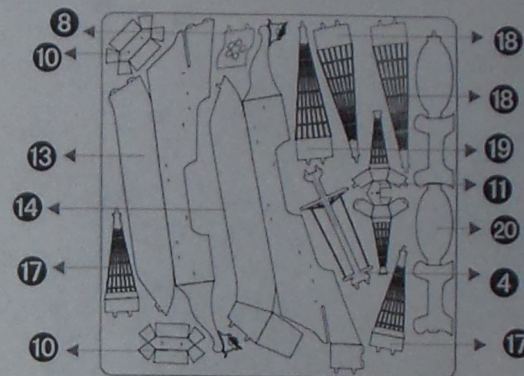
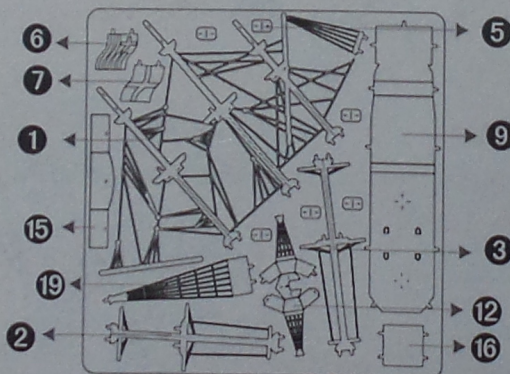
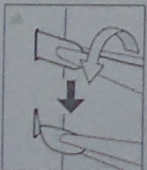
● Insert tab and bend 90 degrees for most visible areas

固定卡扣穿過對應固定孔，卡扣垂直彎曲90度



▲ Insert tab and twist 90 degrees is best in some areas to ensure a tight connection

固定卡扣穿過對應固定孔，卡扣垂直旋轉90度



Assembly Flow Chart 拼裝流程圖

